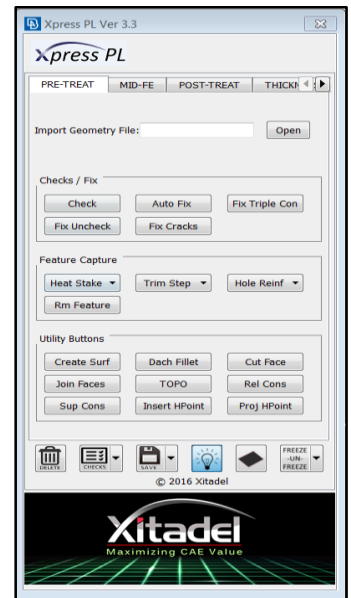
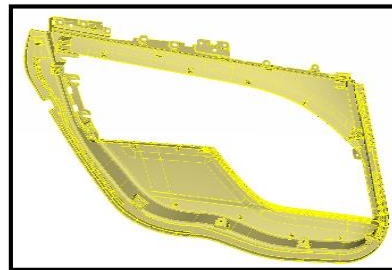
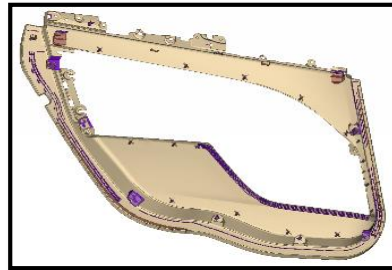


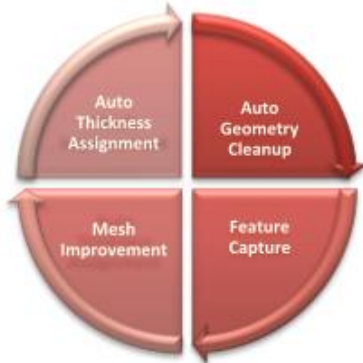
Xpress PL – Slash Plastics Modeling time by 30% to 50% or more

Xpress PL is a productivity tool from Xitadel that maximises effectiveness of ANSA for Plastics modeling. Xpress PL achieves high productivity through automation of library of Plastics features such as Heat Stakes, Dog Houses, Clip Towers etc. Xpress PL is useful for applications like vehicle interiors, bumpers, door trim, instrument panels, etc.

Xpress PL runs seamlessly in the ANSA environment and provides a set of additional functionalities that appear as new panels in ANSA. Xpress PL is used extensively by Global Auto OEMs.



Xpress PL Functionality



Auto Geometry Cleanup - Automatic and semi-automatic fixing of geometrical errors, geometry cleanup and MID-FE capturing

Feature Capture - Library of common features like Heat Stake, Dog House, Clip Tower, Locator, Hole Reinforcement, Male & Female Connectors

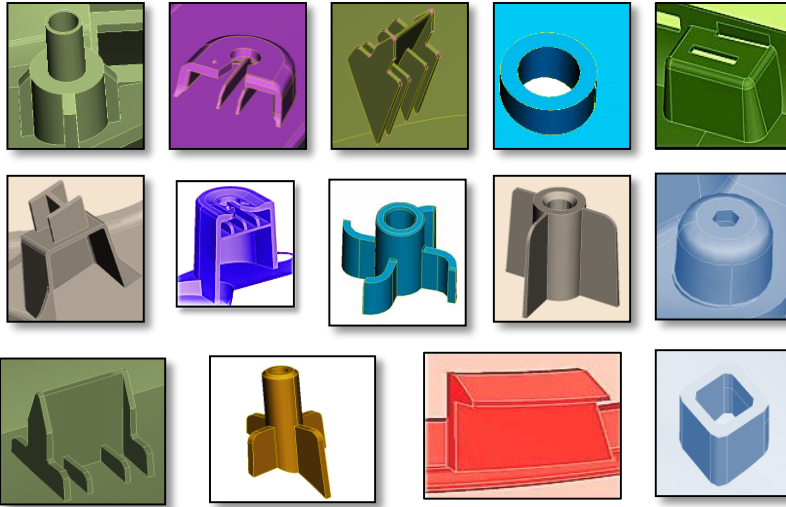
Mesh Improvement - Automatic functionality improves mesh flow, fixes failed elements and minimizes triangular elements

Auto Thickness Assignment – Assigns thickness as per industry guidelines.

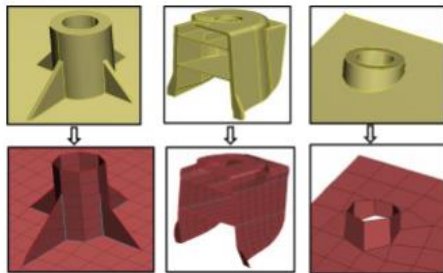
Xpress PL Features

- Automatic geometry cleanup
- Robust algorithm for MID-FE generation
- Advanced feature library for heat stakes (bosses)
- Quick capturing for plastic features such as heat stakes clip towers, locators and hole reinforcements
- Automated flow correction in honeycomb region
- Custom step thickness assignment with band creation
- Automated element quality correction
- Automated flow improvement
- Custom PID renaming with flexibility of 5 fields.
- Automated Renumbering of nodes, elements, PID's
- Custom checks such as node deviation check and quality checks

Library of plastics features- Expanding and Customizable



Xpress PL Feature Capture



Performance Enhancement

Benchmark studies have shown modeling time saving of 30% to 50% or more, accompanied by quality enhancement, mesh flow improvement, features capture, material capture, etc.

For more information

If you would like more information or a demonstration of Xpress PL, please contact sales@xitadel.com

Note -ANSA is a registered trademark of BETA CAE Systems. Xpress PL is registered trademark of Xitadel Group.

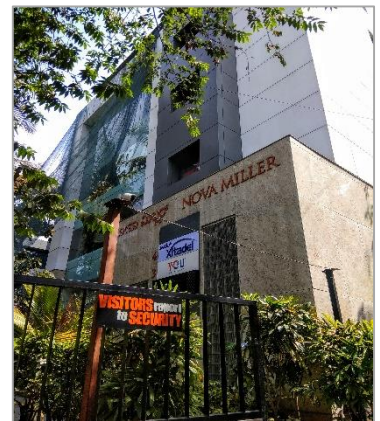
About Xitadel Group

Xitadel Group's mission is "Maximizing CAE Value". We offer leading edge CAE technologies to our clients.

Xitadel also addresses the vital technology ecosystem and offers high-end CAE services including CAE process automation, light weight materials, optimization, vehicle dynamics, etc.

Xitadel provides technology solutions to over 100 global OEMs, suppliers and engineering services providers. Xitadel's solutions cover key industries including Automotive, Aerospace, Industrial Equipment, etc.

Xitadel also creates value through its worldwide network of US and European partner organizations.



Locations

Detroit, Michigan
Bangalore, India
Pune, India
Chennai, India